



ELK Biotechnology

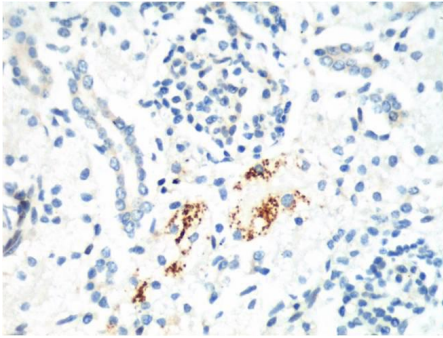
Kif 7 Mouse mAb

Catalog NO.: EM1063

For research use only.

Overview

Product name	Kif 7 Mouse Monoclonal antibody
Source	Mouse
Applications	IHC
Species reactivity	Human Rat Mouse
Recommended dilutions	Immunohistochemistry:1/200 NOTE: Optimal dilutions should be determined by the end user.
Immunogen	Synthetic Peptide
Species	Human
Storage	PBS with 0.02% sodium azide and 50% glycerol pH 7.4. Store at -20° C. Avoid repeated freeze-thaw cycles.
Isotype	IgG1
Clonality	Monoclonal
Concentration	1 mg/ml
Observed band	N/A
GeneID (Human)	374654
Human Swiss-Prot No.	Q2M1P5
Cellular localization	Cell projection cilium
Alternative Names	kinesin family member 7 Kinesin like protein KIF7 UNQ340
Background	A kinesin is a protein belonging to a class of motor proteins found in eukaryotic cells. Kinesins move along microtubule filaments and are powered by the hydrolysis of ATP (thus kinesins are ATPases). Kinesins were discovered as microtubule (MT)-based anterograde intracellular transport motors. The founding member of this superfamily kinesin-1 was isolated as a heterotetrameric fast axonal organelle transport motor consisting of 2 identical motor subunits (KHC) and 2 "light chains" (KLC) via microtubule affinity purification from neuronal cell extracts.



IHC staining of Mouse Kidney tissue with Kif 7 mouse mAb(3F8) diluted at:200.