



ELK Biotechnology

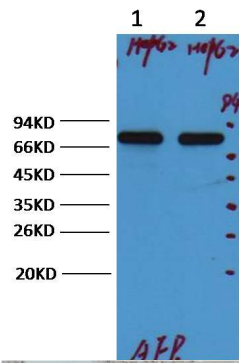
AFP/alpha Fetoprotein Mouse mAb

Catalog NO.: EM1075

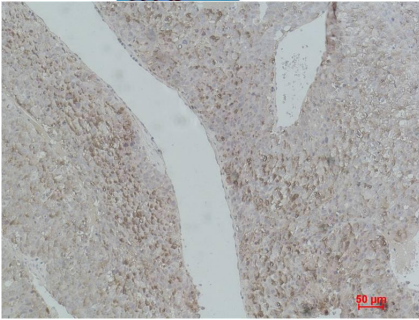
For research use only.

Overview

Product name	AFP/alpha Fetoprotein Mouse Monoclonal antibody
Source	Mouse
Applications	WB IHC
Species reactivity	Human
Recommended dilutions	WesternBlot:1/2000 Immunohistochemistry:1/200-500 NOTE: Optimal dilutions should be determined by the end user.
Immunogen	Synthetic Peptide
Species	Human
Storage	PBS with 0.02% sodium azide and 50% glycerol pH 7.4. Store at -20° C. Avoid repeated freeze-thaw cycles.
Isotype	IgG1
Clonality	Monoclonal
Concentration	1 mg/ml
Observed band	70kDa
GeneID (Human)	174
Human Swiss-Prot No.	P02771
Cellular localization	Secreted
Alternative Names	Alpha fetoprotein Alpha fetoglobulin alpha fetoprotein FETA HPAFP
Background	alpha-1-fetoprotein (AFP) is a protein that in humans is encoded by the AFP gene. The AFP gene is located on the q arm of chromosome 4 (4q25).AFP is a major plasma protein produced by the yolk sac and the liver during fetal development that is thought to be the fetal form of serum albumin. AFP binds to copper nickel fatty acids and bilirubin and is found in monomeric dimeric and trimeric forms.



Western blot analysis of HepG2 with AFP Mouse mAb diluted at:2000.



Immunohistochemical analysis of paraffin-embedded Human Hepatocarcinoma using AFP (EM1075) Mouse mAb diluted at:500.