



ELK Biotechnology

Cytokeratin8 Mouse mAb

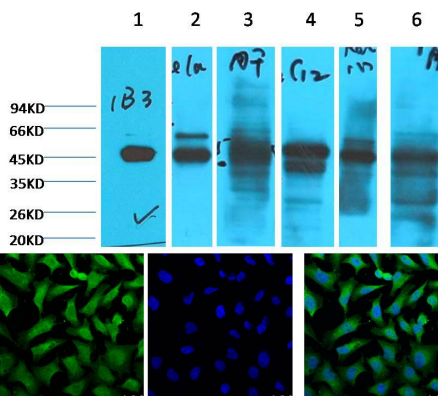
Catalog NO.: EM1095

For research use only.

Overview

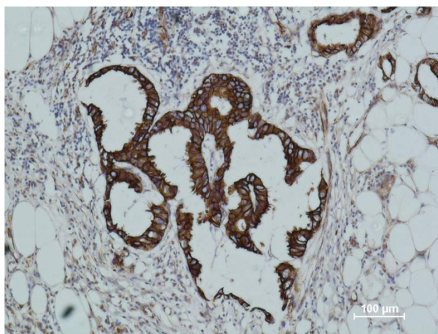
Product name	Cytokeratin8 Mouse Monoclonal antibody
Source	Mouse
Applications	WB IHC IF
Species reactivity	Human Rat Mouse
Recommended dilutions	WesternBlot:1/1000-3000 Immunofluorescence:1/100-200 Immunohistochemistry:1/200-500 NOTE: Optimal dilutions should be determined by the end user.
Immunogen	Recombinant Protein
Species	Human
Storage	PBS with 0.02% sodium azide and 50% glycerol pH 7.4. Store at -20° C. Avoid repeated freeze-thaw cycles.
Isotype	IgG1
Clonality	Monoclonal
Concentration	1 mg/ml
Observed band	46kDa
GeneID (Human)	3875
Human Swiss-Prot No.	P05783
Cellular localization	Cytoplasm Intermediate filament Keratin Nucleus
Alternative Names	Cell proliferation inducing gene 46 protein CK8 CYK8 K8 Keratin8 Ketatin D KRT18
Background	Keratin8 is a type I cytokeratin. It is together with its filament partner keratin 8 perhaps the most commonly found products of the intermediate filament gene family. They are expressed in single layer epithelial tissues of the body. Mutations in this gene have been linked to cryptogenic cirrhosis. Two transcript variants encoding the same protein have been found for this

gene. Keratin8 is often used together with keratin 8 and keratin9 to differentiate cells of epithelial origin from hematopoietic cells in tests that enumerate circulating tumor cells in blood.



Western blot analysis of) HepG2 2) HeLa 3) Mouse Liver tissue 4) C2C12 5) Rat Heart tissue 6) Mouse Skeletal Muscle tissue with Cytokeratin8 Mouse MAb (1B3) diluted at:2000.

IF analysis of HeLa with EM1095(Left) and DAPI (Right) diluted at:100.



Immunohistochemical analysis of paraffin-embedded human breast carcinoma using Cytokeratin8 (EM1095) Mouse mAb diluted at:500.