



# ELK Biotechnology

**CBP-Tag Mouse mAb**  
**Catalog NO.: EM1126**  
**For research use only.**

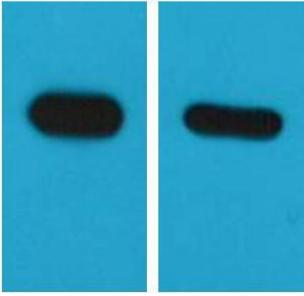
## Overview

---

Product name	CBP-Tag Mouse Monoclonal antibody
Source	Mouse
Applications	<b>WB IP</b>
Species reactivity	<b>N/A</b>
Recommended dilutions	<b>WesternBlot:1/5000</b> <b>Immunoprecipitation:1/200</b> <b>NOTE: Optimal dilutions should be determined by the end user.</b>
Immunogen	Recombinant Protein
Species	N/A
Storage	PBS with 0.02% sodium azide and 50% glycerol pH 7.4. Store at -20° C. Avoid repeated freeze-thaw cycles.
Isotype	IgG1
Clonality	Monoclonal
Concentration	1 mg/ml
Observed band	<b>N/A</b>
GeneID (Human)	N/A
Human Swiss-Prot No.	N/A
Cellular localization	N/A
Alternative Names	calmodulin binding peptide
Background	Epitope mapping within the calmodulin binding peptide (CBP) region of the TAP (tandem affinity purification) tag of human.

1

2



Western blot analysis of CBP recombinant protein with EM1126 diluted at) :5000 2):10000