



ELK Biotechnology

EGFR Mouse mAb

Catalog NO.: EM1134

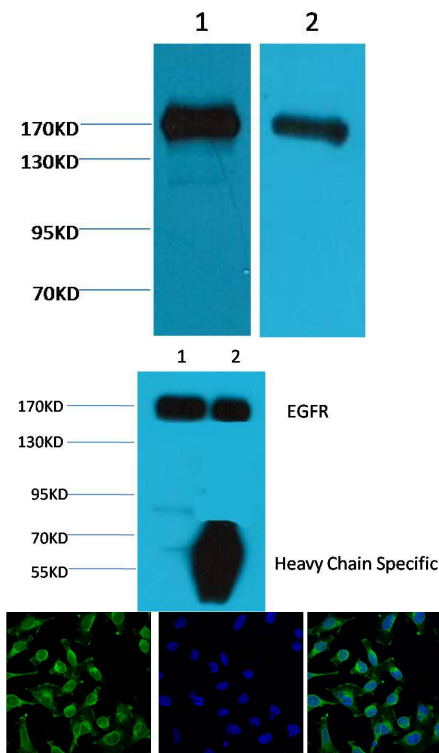
For research use only.

Overview

Product name	EGFR Mouse Monoclonal antibody
Source	Mouse
Applications	WB IHC IF IP
Species reactivity	Human
Recommended dilutions	WesternBlot:1/1000-3000 Immunoprecipitation:1/200 Immunofluorescence:1/100-200 NOTE: Optimal dilutions should be determined by the end user.
Immunogen	Synthetic Peptide
Species	Human
Storage	PBS with 0.02% sodium azide and 50% glycerol pH 7.4. Store at -20° C. Avoid repeated freeze-thaw cycles.
Isotype	IgG1
Clonality	Monoclonal
Concentration	1 mg/ml
Observed band	170kDa
GeneID (Human)	1956
Human Swiss-Prot No.	P00533
Cellular localization	N/A
Alternative Names	Epidermal Growth Factor Receptor ;ErbB-1; ErbB1; ER1; ERB-B1; MENA; HER1; Erythroblastic Leukemia Viral(v-Erb-B)oncogene HomologAvian; Proto-oncogene c-ErbB-1; Receptor tyrosine-protein kinase erbB-1
Background	The epidermal growth factor receptor (EGFR; ErbB-1; HER1 in humans) is the cell-surface receptor for members of the epidermal growth factor family (EGF-family) of extracellular protein ligands. Known ligands include EGF TGFA/TGF-alpha amphiregulin epigen/EPGN BTC/betacellulin

epiregulin/EREG and HBEGF/heparin-binding EGF. Ligand binding triggers receptor homo- and/or heterodimerization and autophosphorylation on key cytoplasmic residues. The phosphorylated receptor recruits adapter proteins like GRB2 which in turn activates complex downstream signaling cascades.

Western blot analysis of A431 2) HeLa with EM1134 diluted at:2000.



1、 Input: HeLa Cell Lysate 2、 IP product: IP dilute:200 Western blot analysis: primary antibody : EM1134:1000 Secondary antibody: Goat anti-Mouse IgG Heavy Chain Specific(S003):5000

IF analysis of HeLa with EM1134(Left) and DAPI (Right) diluted at:100.