



# ELK Biotechnology

$\beta$  II tubulin Mouse mAb

Catalog NO.: EM1151

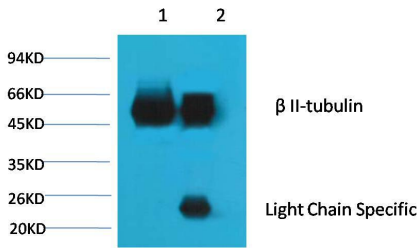
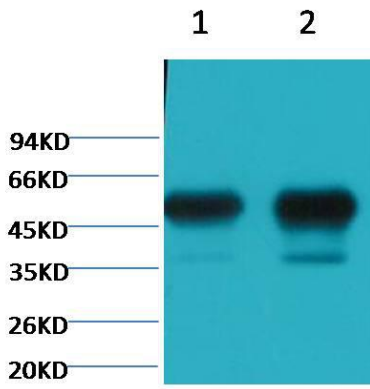
For research use only.

## Overview

---

Product name	$\beta$ II tubulin Mouse Monoclonal antibody
Source	Mouse
Applications	WB IP
Species reactivity	Rat Mouse Human
Recommended dilutions	WesternBlot:1/50000-100000 Immunoprecipitation:1/200 NOTE: Optimal dilutions should be determined by the end user.
Immunogen	Synthetic Peptide
Species	Human
Storage	PBS with 0.02% sodium azide and 50% glycerol pH 7.4. Store at -20° C. Avoid repeated freeze-thaw cycles.
Isotype	IgGq
Clonality	Monoclonal
Concentration	1 mg/ml
Observed band	50kDa
GeneID (Human)	7280
Human Swiss-Prot No.	P68371
Cellular localization	Cytoplasmcytoskeleton
Alternative Names	class II beta tubulin isotype antibody TUBB 2 antibody Tubulin beta 2 antibody
Background	Tubulin is the major constituent of microtubules. It exists as a heterodimer consisting of an alpha and a beta subunit. Class II beta tubulin is the major form of tubulin beta in neurons although it is not neuronal specific. It is found in many other tissues including lung tissue and Schwann cells.

Western blot analysis of) Mouse Brain tissue 2) Rat Brain tissue with EM1151 diluted at:100000.



1、 Input: Mouse Brain Tissue Lysate 2、 IP product: IP dilute:200 Western blot analysis: primary antibody : EM1151 :10000 Secondary antibody: Goat anti-Mouse IgG Light chain specific (S003):5000