



ELK Biotechnology

Rabbit IgG(Light Chain Specific) Mouse mAb

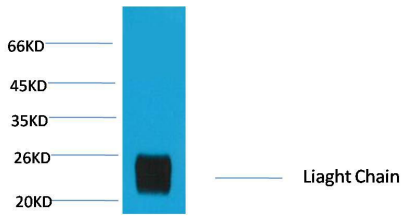
Catalog NO.: EM1169

For research use only.

Overview

Product name	Rabbit IgG(Light Chain Specific) Mouse Monoclonal antibody
Source	Mouse
Applications	WB IHC
Species reactivity	Rat
Recommended dilutions	WesternBlot:1/5000-20000 Immunohistochemistry:1/200-500 NOTE: Optimal dilutions should be determined by the end user.
Immunogen	Recombinant Protein
Species	Rabbit
Storage	PBS with 0.02% sodium azide and 50% glycerol pH 7.4. Store at -20° C. Avoid repeated freeze-thaw cycles.
Isotype	IgG1
Clonality	Monoclonal
Concentration	1 mg/ml
Observed band	25kDa
GeneID (Human)	N/A
Human Swiss-Prot No.	N/A
Cellular localization	N/A
Alternative Names	N/A

Background
The antibody reacts with the light chains on rabbit IgG and with those common to other rabbit immunoglobulins. The antibody does not react with the heavy chain of rabbit IgG. The antibody minimal cross-reaction with bovine goat Armenian hamster horse human mouse rat and sheep immunoglobulins but it may cross-react with IgG from other species. The antibody reacts with whole molecule rabbit IgG. The antibody may cross-react with immunoglobulins from other species.



Western blot analysis of Reduced Rabbit IgG H+L with EM1169 diluted at:10000.