



ELK Biotechnology

β -tubulin(HRP Conjugated) Mouse mAb

Catalog NO.: EM1175

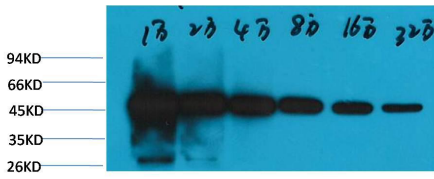
For research use only.

Overview

Product name	β -tubulin(HRP Conjugated) Mouse Monoclonal antibody
Source	Mouse
Applications	WB IHC
Species reactivity	Human Rat Mouse Monkey Dog Chicken Hamster Rabbit Sheep Insect Yeast
Recommended dilutions	WesternBlot:1/20000-640000 Immunohistochemistry:1/1000-1/2000 NOTE: Optimal dilutions should be determined by the end user.
Immunogen	Recombinant Protein
Species	Human
Storage	PBS with 0.02% sodium azide and 50% glycerol pH 7.4. Store at -20° C. Avoid repeated freeze-thaw cycles.
Isotype	IgG1
Clonality	Monoclonal
Concentration	1 mg/ml
Observed band	55kDa
GeneID (Human)	203068
Human Swiss-Prot No.	P07437
Cellular localization	N/A
Alternative Names	Beta 4 tubulin TBB5 TUBB2 TUBB2A tubulin beta 2A beta tubulin tubulin beta chain

Background Microtubules are constituent parts of the mitotic apparatus cilia flagella and elements of the cytoskeleton. They consist principally of 2 soluble proteins alpha- and beta-tubulin each of about 55000 Da. Antibodies against beta Tubulin are useful as loading controls for Western Blotting. However it should be noted that levels of β -Tubulin may not be stable in certain cells.

For example expression of β -Tubulin in adipose tissue is very low and therefore β -Tubulin should not be used as loading control for these tissues.



Western blot analysis of HeLa with β -tubulin-HRP Conjugated EM1175 diluted at: 10000 20000 40000 80000 160000 320000.