



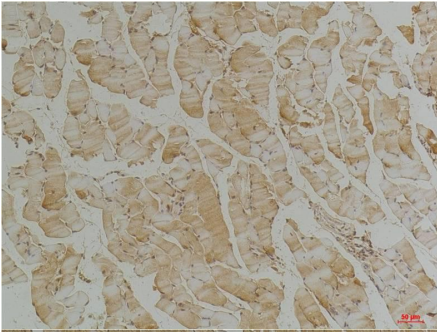
# ELK Biotechnology

**Desmin Mouse mAb**  
**Catalog NO.: EM1218**  
**For research use only.**

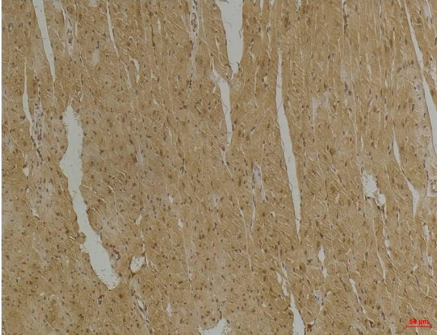
## Overview

---

Product name	Desmin Mouse Monoclonal antibody
Source	Mouse
Applications	<b>IHC</b>
Species reactivity	<b>Human Rat Mouse</b>
Recommended dilutions	<b>Immunohistochemistry:1/100-200</b> <b>NOTE: Optimal dilutions should be determined by the end user.</b>
Immunogen	Recombinant Protein
Species	Human
Storage	PBS with 0.02% sodium azide and 50% glycerol pH 7.4. Store at -20° C. Avoid repeated freeze-thaw cycles.
Isotype	IgG1
Clonality	Monoclonal
Concentration	1 mg/ml
Observed band	<b>53kDa</b>
GeneID (Human)	1674
Human Swiss-Prot No.	P17661
Cellular localization	Cytoplasm
Alternative Names	CMD11 CSM1CSM2 DES FLJ12025
Background	Desmin is a myogenic marker expressed in early development that forms a network of filaments that extends across the myofibril and surrounds Z discs. The desmin cytoskeleton provides a connection among myofibrils organelles and the cytoskeleton.



Immunohistochemical analysis of paraffin-embedded Mouse Skeletal Muscle Tissue using Desmin (EM1218) Mouse mAb diluted at:200.



Immunohistochemical analysis of paraffin-embedded Mouse Heart Tissue using Desmin (EM1218) Mouse mAb diluted at:200.