



# ELK Biotechnology

LC3A (5G10) Mouse mAb

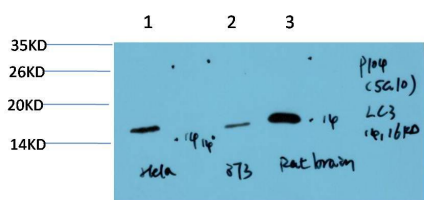
Catalog NO.: EM1298

For research use only.

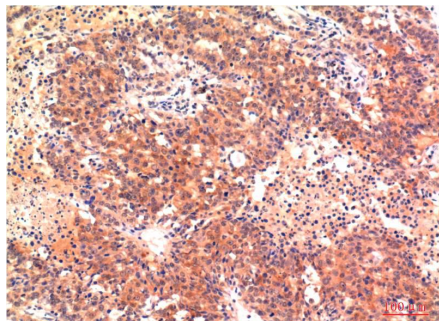
## Overview

---

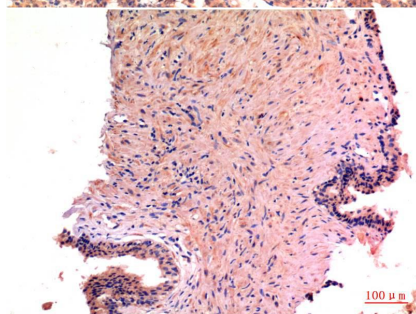
Product name	LC3A (5G10) Mouse Monoclonal antibody
Source	Mouse
Applications	<b>WB IHC</b>
Species reactivity	<b>Human Rat Mouse</b>
Recommended dilutions	<b>WesternBlot:1/1000-2000</b> <b>Immunohistochemistry:1/100-200</b> <b>NOTE: Optimal dilutions should be determined by the end user.</b>
Immunogen	Synthetic Peptide
Species	Human
Storage	PBS with 0.02% sodium azide and 50% glycerol pH 7.4. Store at -20° C. Avoid repeated freeze-thaw cycles.
Isotype	IgG1
Clonality	Monoclonal
Concentration	1 mg/ml
Observed band	<b>1416kDa</b>
GenelD (Human)	84557
Human Swiss-Prot No.	Q9H492
Cellular localization	Cytoplasm Cytoplasmic vesicle Cytoskeleton Membrane Microtubule
Alternative Names	ATG8E MAP1LC3Aautophage-related protein LC3A
Background	Three human LC3 isoforms (LC3A LC3B and LC3C) undergo post-translational modifications during autophagy. Cleavage of LC3 at the carboxy terminus immediately following synthesis yields the cytosolic LC3-I form.



Western blot analysis of) HeLa Cell Lysate 2) 3T3 Cell Lysate 3) Rat Brain Tissue Lysate using LC3A ( EM1298 ) Mouse mAb diluted at:1000.



Immunohistochemical analysis of paraffin-embedded Human Hepatocarcinoma Tissue using LC3A ( EM1298 ) Mouse mAb diluted at:200.



Immunohistochemical analysis of paraffin-embedded Human Prostate Carcinoma Tissue using LC3A ( EM1298 ) Mouse mAb diluted at:200.