



ELK Biotechnology

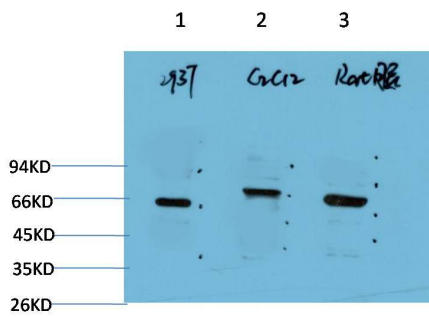
Beclin-1 (5C2) Mouse mAb

Catalog NO.: EM1304

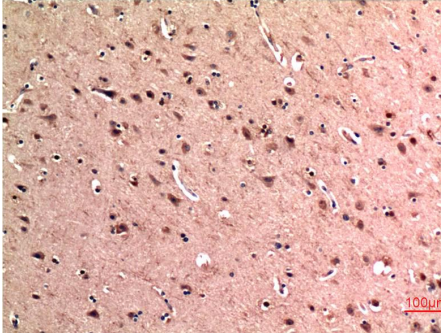
For research use only.

Overview

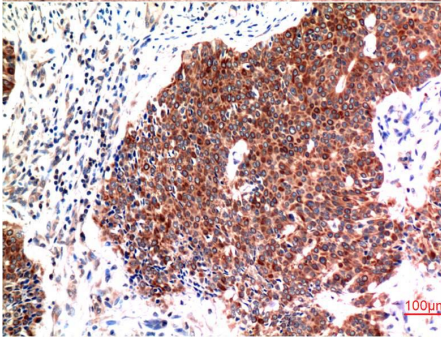
Product name	Beclin-1 (5C2) Mouse Monoclonal antibody
Source	Mouse
Applications	WB IHC
Species reactivity	Human Rat Mouse
Recommended dilutions	WesternBlot:1/1000-2000 Immunohistochemistry:1/100-200 NOTE: Optimal dilutions should be determined by the end user.
Immunogen	Synthetic Peptide
Species	Human
Storage	PBS with 0.02% sodium azide and 50% glycerol pH 7.4. Store at -20° C. Avoid repeated freeze-thaw cycles.
Isotype	IgG1
Clonality	Monoclonal
Concentration	1 mg/ml
Observed band	60kDa
GenelD (Human)	8678
Human Swiss-Prot No.	Q14457
Cellular localization	Cytoplasm Cytoplasmic vesicle Endoplasmic reticulum Endosome Golgi apparatus Membrane Mitochondrion Nucleus
Alternative Names	ATG6 Bcl-2 interacting protein beclin BECN1 Coiled coil myosin like BCL2 interacting protein
Background	Autophagy is a catabolic process for the autophagosomic-lysosomal degradation of proteins activated in response to nutrient deprivation and in neurodegenerative conditions. One of the proteins critical to this process is Beclin-1.



Western blot analysis of 1) 293T Cell Lysate 2) C2C12 Cell Lysate 3) Rat Brain Tissue Lysate using Beclin-1 (EM1304) Mouse mAb diluted at:200.



Immunohistochemical analysis of paraffin-embedded Human Brain Tissue using Beclin-1 (EM1304) Mouse mAb diluted at:200.



Immunohistochemical analysis of paraffin-embedded Human Breast Carcinoma Tissue using Beclin-1 (EM1304) Mouse mAb diluted at:200.