



ELK Biotechnology

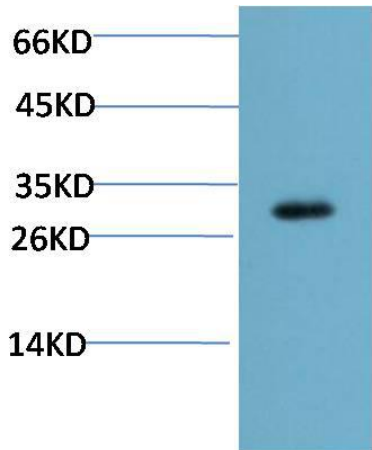
CHOP (2B1) Mouse mAb

Catalog NO.: EM1317

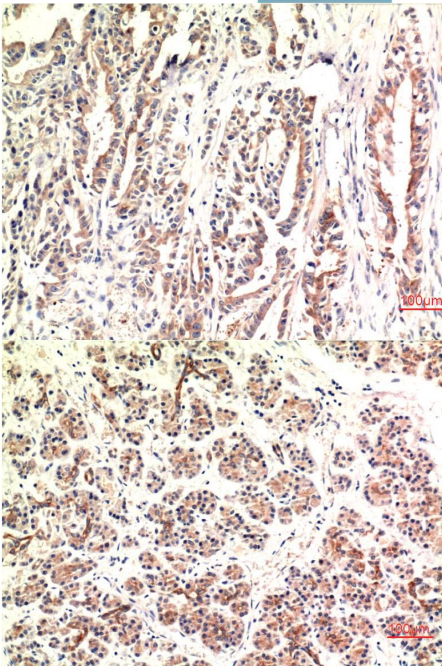
For research use only.

Overview

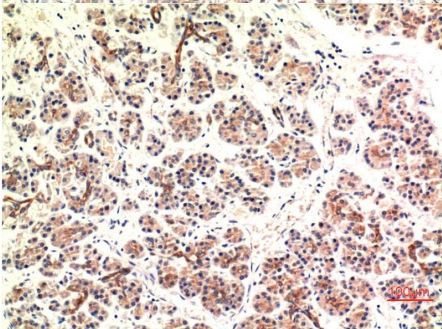
Product name	CHOP (2B1) Mouse Monoclonal antibody
Source	Mouse
Applications	WB IHC
Species reactivity	Human Rat Mouse
Recommended dilutions	WesternBlot:1/1000-2000 Immunohistochemistry:1/100-200 NOTE: Optimal dilutions should be determined by the end user.
Immunogen	Synthetic Peptide
Species	Human
Storage	PBS with 0.02% sodium azide and 50% glycerol pH 7.4. Store at -20° C. Avoid repeated freeze-thaw cycles.
Isotype	IgG1
Clonality	Monoclonal
Concentration	1 mg/ml
Observed band	27kDa
GenelD (Human)	1649
Human Swiss-Prot No.	P35638
Cellular localization	Nucleus
Alternative Names	GADD153 DDIT3MGC4154
Background	CHOP was identified as a C/EBP-homologous protein that inhibits C/EBP and LAP in a dominant-negative manner. CHOP expression is induced by certain cellular stresses including starvation and the induced CHOP suppresses cell cycle progression from G1 to S phase.



Western blot analysis of Mouse Liver Tissue Lysate using CHOP (EM1317) Mouse mAb diluted at:2000



Immunohistochemical analysis of paraffin-embedded Human Stomach Carcinoma Tissue using CHOP (EM1317) Mouse mAb diluted at:200.



Immunohistochemical analysis of paraffin-embedded Human Pancreas Carcinoma Tissue using CHOP (EM1317) Mouse mAb diluted at:200.