



ELK Biotechnology

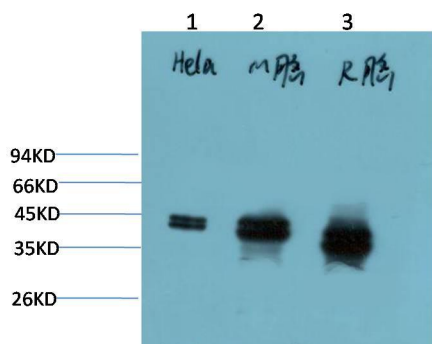
ERK1/2 (1H4) Mouse mAb

Catalog NO.: EM1326

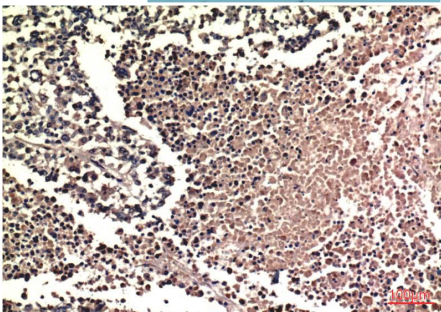
For research use only.

Overview

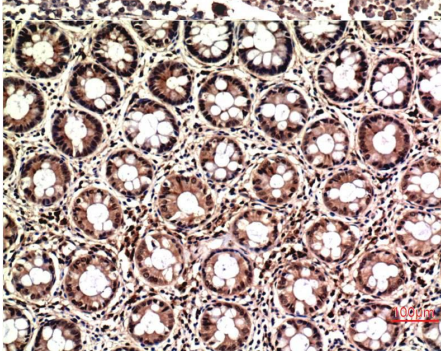
Product name	ERK1/2 (1H4) Mouse Monoclonal antibody
Source	Mouse
Applications	WB IHC
Species reactivity	Human Rat Mouse
Recommended dilutions	WesternBlot:1/1000-2000 Immunohistochemistry:1/100-200 NOTE: Optimal dilutions should be determined by the end user.
Immunogen	Synthetic Peptide
Species	Human
Storage	PBS with 0.02% sodium azide and 50% glycerol pH 7.4. Store at -20° C. Avoid repeated freeze-thaw cycles.
Isotype	IgG1
Clonality	Monoclonal
Concentration	1 mg/ml
Observed band	4442kDa
GenElD (Human)	5594/5595
Human Swiss-Prot No.	P27361/P28482
Cellular localization	Nucleus
Alternative Names	MAPK Mitogen-activated protein Kinase PRKM2MK01
Background	Mitogen-activated protein kinases (MAPKs) are a widely conserved family of serine/threonine protein kinases involved in many cellular programs such as cell proliferation differentiation motility and death. The p44/42 MAPK (Erk1/2) signaling pathway can be activated in response to a diverse range of extracellular stimuli including mitogens growth factors and cytokines and is an important target in the diagnosis and treatment of cancer.



Western blot analysis of) HeLa Cell Lysate 2) Mouse Brain Tissue Lysate 3) Rat Brain Tissue Lysate using ERK1/2 (EM1326) Mouse mAb diluted at:2000.



Immunohistochemical analysis of paraffin-embedded Human Lung Carcinoma Tissue using ERK1/2 (EM1326) Mouse mAb diluted at:200.



Immunohistochemical analysis of paraffin-embedded Human Colon Carcinoma Tissue using ERK1/2 (EM1326) Mouse mAb diluted at:200.