



# Cleaved-Caspase-7 (S199) rabbit pAb

Cat No.:ES1006

For research use only

## Overview

---

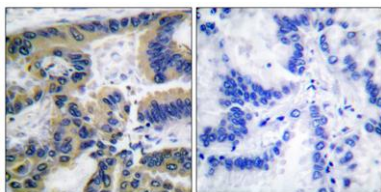
<b>Product Name</b>	Cleaved-Caspase-7 (S199) rabbit pAb
<b>Host species</b>	Rabbit
<b>Applications</b>	WB;IHC;IF;ELISA
<b>Species Cross-Reactivity</b>	Human;Mouse
<b>Recommended dilutions</b>	Western Blot: 1/500 - 1/2000. Immunohistochemistry: 1/100 - 1/300. ELISA: 1/40000. Not yet tested in other applications.
<b>Immunogen</b>	The antiserum was produced against synthesized peptide derived from human Caspase 7. AA range:180-229
<b>Specificity</b>	Cleaved-Caspase-7 (S199) Polyclonal Antibody detects endogenous levels of fragment of activated Caspase-7 protein resulting from cleavage adjacent to S199.
<b>Formulation</b>	Liquid in PBS containing 50% glycerol, 0.5% BSA and 0.02% sodium azide.
<b>Storage</b>	Store at -20°C. Avoid repeated freeze-thaw cycles.
<b>Protein Name</b>	Caspase7
<b>Gene Name</b>	CASP7
<b>Cellular localization</b>	Cytoplasm.
<b>Purification</b>	The antibody was affinity-purified from rabbit antiserum by affinity-chromatography using epitope-specific immunogen.
<b>Clonality</b>	Polyclonal
<b>Concentration</b>	1 mg/ml
<b>Observed band</b>	20kD
<b>Human Gene ID</b>	840
<b>Human Swiss-Prot Number</b>	P55210
<b>Alternative Names</b>	CASP7; MCH3; Caspase-7; CASP-7; Apoptotic protease Mch-3; CMH-1; ICE-like apoptotic protease 3; ICE-LAP3
<b>Background</b>	This gene encodes a member of the cysteine-aspartic acid protease (caspase) family.



Sequential activation of caspases plays a central role in the execution-phase of cell apoptosis. Caspases exist as inactive proenzymes which undergo proteolytic processing at conserved aspartic residues to produce two subunits, large and small, that dimerize to form the active enzyme. The precursor of the encoded protein is cleaved by caspase 3 and 10, is activated upon cell death stimuli and induces apoptosis. Alternatively spliced transcript variants encoding multiple isoforms have been observed for this gene. [provided by RefSeq, May 2012],



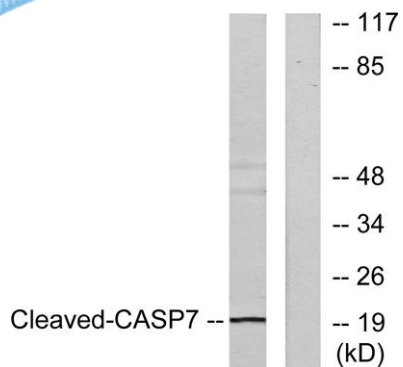
Western Blot analysis of various cells using Cleaved-Caspase-7 (S199) Polyclonal Antibody



Immunohistochemistry analysis of paraffin-embedded human lung carcinoma tissue, using Caspase 7 (Cleaved-Asp198) Antibody. The picture on the right is blocked with the synthesized peptide.



**ELK Biotechnology**



Western blot analysis of lysates from 293 cells, treated with Etoposide 25uM 60', using Caspase 7 (Cleaved-Asp198) Antibody. The lane on the right is blocked with the synthesized peptide.