



Cleaved-Caspase-2 p18 (G170) rabbit pAb

Cat No.:ES1016

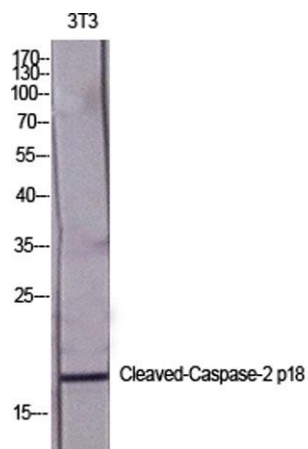
For research use only

Overview

Product Name	Cleaved-Caspase-2 p18 (G170) rabbit pAb
Host species	Rabbit
Applications	WB;ELISA
Species Cross-Reactivity	Human;Mouse;Rat
Recommended dilutions	Western Blot: 1/500 - 1/2000. ELISA: 1/40000. Not yet tested in other applications.
Immunogen	The antiserum was produced against synthesized peptide derived from human Caspase 2 p18 N-terminal. AA range:151-200
Specificity	Cleaved-Caspase-2 p18 (G170) Polyclonal Antibody detects endogenous levels of fragment of activated Caspase-2 p18 protein resulting from cleavage adjacent to G170.
Formulation	Liquid in PBS containing 50% glycerol, 0.5% BSA and 0.02% sodium azide.
Storage	Store at -20°C. Avoid repeated freeze-thaw cycles.
Protein Name	Caspase2
Gene Name	CASP2
Cellular localization	nucleus,cytoplasm,mitochondrion,cytosol,membrane,
Purification	The antibody was affinity-purified from rabbit antiserum by affinity-chromatography using epitope-specific immunogen.
Clonality	Polyclonal
Concentration	1 mg/ml
Observed band	18 or 35kD
Human Gene ID	835
Human Swiss-Prot Number	P42575
Alternative Names	CASP2; ICH1; NEDD2; Caspase-2; CASP-2; Neural precursor cell expressed developmentally down-regulated protein 2; NEDD-2; Protease ICH-1
Background	This gene encodes a member of the cysteine-aspartic acid protease (caspase) family. Caspases mediate cellular apoptosis through the proteolytic cleavage of



specific protein substrates. The encoded protein may function in stress-induced cell death pathways, cell cycle maintenance, and the suppression of tumorigenesis. Increased expression of this gene may play a role in neurodegenerative disorders including Alzheimer's disease, Huntington's disease and temporal lobe epilepsy. Alternatively spliced transcript variants encoding multiple isoforms have been observed for this gene. [provided by RefSeq, Jan 2011],



Western Blot analysis of various cells using
Cleaved-Caspase-2 p18 (G170) Polyclonal Antibody
diluted at 1:2000

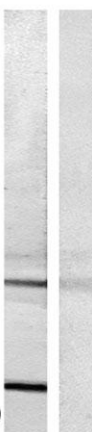


Western Blot analysis of Jurkat cells using
Cleaved-Caspase-2 p18 (G170) Polyclonal Antibody
diluted at 1:2000



ELK Biotechnology

CASP2 --
(p18,Cleaved-Gly170)



Western blot analysis of lysates from Jurkat cells, treated with etoposide 25uM 24h, using Caspase 2 (p18,Cleaved-Gly170) Antibody. The lane on the right is blocked with the synthesized peptide.