



# Cleaved-Caspase-5 p20 (D121) rabbit pAb

Cat No.:ES1021

For research use only

## Overview

<b>Product Name</b>	Cleaved-Caspase-5 p20 (D121) rabbit pAb
<b>Host species</b>	Rabbit
<b>Applications</b>	WB;ELISA
<b>Species Cross-Reactivity</b>	Human;Rat;Mouse;
<b>Recommended dilutions</b>	Western Blot: 1/500 - 1/2000. ELISA: 1/20000. Not yet tested in other applications.
<b>Immunogen</b>	The antiserum was produced against synthesized peptide derived from human Caspase 5. AA range:102-151
<b>Specificity</b>	Cleaved-Caspase-5 p20 (D121) Polyclonal Antibody detects endogenous levels of fragment of activated Caspase-5 p20 protein resulting from cleavage adjacent to D121.
<b>Formulation</b>	Liquid in PBS containing 50% glycerol, 0.5% BSA and 0.02% sodium azide.
<b>Storage</b>	Store at -20°C. Avoid repeated freeze-thaw cycles.
<b>Protein Name</b>	Caspase5
<b>Gene Name</b>	CASP5
<b>Cellular localization</b>	neuron projection,neuronal cell body,IPAF inflammasome complex,NLRP1 inflammasome complex,NLRP3 inflammasome complex,AIM2 inflammasome complex,
<b>Purification</b>	The antibody was affinity-purified from rabbit antiserum by affinity-chromatography using epitope-specific immunogen.
<b>Clonality</b>	Polyclonal
<b>Concentration</b>	1 mg/ml
<b>Observed band</b>	22kD
<b>Human Gene ID</b>	838
<b>Human Swiss-Prot Number</b>	P51878
<b>Alternative Names</b>	CASP5; ICH3; Caspase-5; CASP-5; ICE(rel)-III; Protease ICH-3; Protease TY
<b>Background</b>	This gene encodes a member of the

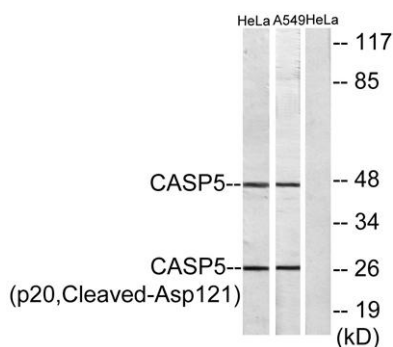




cysteine-aspartic acid protease (caspase) family. Sequential activation of caspases plays a central role in the execution-phase of cell apoptosis. Caspases exist as inactive proenzymes which undergo proteolytic processing at conserved aspartic residues to produce two subunits, large and small, that dimerize to form the active enzyme. Overexpression of the active form of this enzyme induces apoptosis in fibroblasts. Max, a central component of the Myc/Max/Mad transcription regulation network important for cell growth, differentiation, and apoptosis, is cleaved by this protein; this process requires Fas-mediated dephosphorylation of Max. The expression of this gene is regulated by interferon-gamma and lipopolysaccharide. Alternatively spliced transcript variants have been identified for this gene. [provided by RefSeq, Aug 2010],



Western Blot analysis of various cells using Cleaved-Caspase-5 p20 (D121) Polyclonal Antibody diluted at 1:1000



Western blot analysis of lysates from HeLa and A549 cells, treated with etoposide 25uM 24h, using Caspase 5 (p20,Cleaved-Asp121) Antibody. The lane on the right is blocked with the synthesized peptide.

