



# Cleaved-Cathepsin G (I21) rabbit pAb

Cat No.:ES1031

For research use only

## Overview

<b>Product Name</b>	Cleaved-Cathepsin G (I21) rabbit pAb
<b>Host species</b>	Rabbit
<b>Applications</b>	WB;ELISA
<b>Species Cross-Reactivity</b>	Human;Mouse;Rat
<b>Recommended dilutions</b>	Western Blot: 1/500 - 1/2000. ELISA: 1/20000. Not yet tested in other applications.
<b>Immunogen</b>	The antiserum was produced against synthesized peptide derived from human CATG. AA range:2-51
<b>Specificity</b>	Cleaved-Cathepsin G (I21) Polyclonal Antibody detects endogenous levels of fragment of activated Cathepsin G protein resulting from cleavage adjacent to I21.
<b>Formulation</b>	Liquid in PBS containing 50% glycerol, 0.5% BSA and 0.02% sodium azide.
<b>Storage</b>	Store at -20°C. Avoid repeated freeze-thaw cycles.
<b>Protein Name</b>	Cathepsin G
<b>Gene Name</b>	CTSG
<b>Cellular localization</b>	Cell membrane ; Peripheral membrane protein . Cytoplasmic granule . Secreted . Cytoplasm, cytosol . Lysosome . Nucleus . Secreted by activated neutrophils (PubMed:3390156). Detected in synovial fluid (PubMed:32144329). Localizes to lysosomes in B cells wh
<b>Purification</b>	The antibody was affinity-purified from rabbit antiserum by affinity-chromatography using epitope-specific immunogen.
<b>Clonality</b>	Polyclonal
<b>Concentration</b>	1 mg/ml
<b>Observed band</b>	28+26kD
<b>Human Gene ID</b>	1511
<b>Human Swiss-Prot Number</b>	P08311
<b>Alternative Names</b>	CTSG; Cathepsin G; CG
<b>Background</b>	The protein encoded by this gene, a member of the

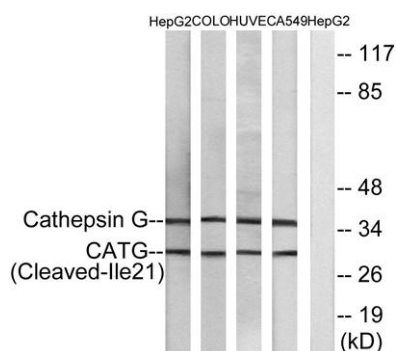




peptidase S1 protein family, is found in azurophilic granules of neutrophilic polymorphonuclear leukocytes. The encoded protease has a specificity similar to that of chymotrypsin C, and may participate in the killing and digestion of engulfed pathogens, and in connective tissue remodeling at sites of inflammation. In addition, the encoded protein is antimicrobial, with bacteriocidal activity against *S. aureus* and *N. gonorrhoeae*. Transcript variants utilizing alternative polyadenylation signals exist for this gene. [provided by RefSeq, Sep 2014],



Western Blot analysis of various cells using Cleaved-Cathepsin G (I21) Polyclonal Antibody



Western blot analysis of lysates from HepG2, COLO, HUVEC, and A549 cells, using CATG (Cleaved-Ile21) Antibody. The lane on the right is blocked with the synthesized peptide.

