



# Cleaved-COL1A2 (G1102) rabbit pAb

Cat No.:ES1034

For research use only

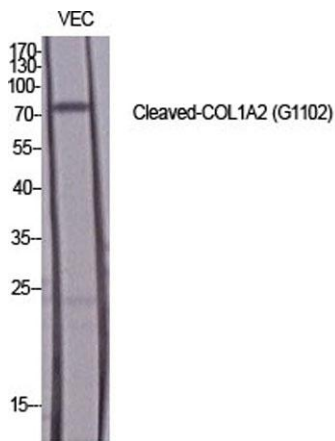
## Overview

<b>Product Name</b>	Cleaved-COL1A2 (G1102) rabbit pAb
<b>Host species</b>	Rabbit
<b>Applications</b>	WB;ELISA
<b>Species Cross-Reactivity</b>	Human;Rat;Mouse;
<b>Recommended dilutions</b>	Western Blot: 1/500 - 1/2000. ELISA: 1/10000. Not yet tested in other applications.
<b>Immunogen</b>	The antiserum was produced against synthesized peptide derived from human Collagen I alpha2. AA range:1053-1102
<b>Specificity</b>	Cleaved-COL1A2 (G1102) Polyclonal Antibody detects endogenous levels of fragment of activated COL1A2 protein resulting from cleavage adjacent to G1102.
<b>Formulation</b>	Liquid in PBS containing 50% glycerol, 0.5% BSA and 0.02% sodium azide.
<b>Storage</b>	Store at -20°C. Avoid repeated freeze-thaw cycles.
<b>Protein Name</b>	Collagen alpha-2(I) chain
<b>Gene Name</b>	COL1A2
<b>Cellular localization</b>	Secreted, extracellular space, extracellular matrix .
<b>Purification</b>	The antibody was affinity-purified from rabbit antiserum by affinity-chromatography using epitope-specific immunogen.
<b>Clonality</b>	Polyclonal
<b>Concentration</b>	1 mg/ml
<b>Observed band</b>	92kD
<b>Human Gene ID</b>	1278
<b>Human Swiss-Prot Number</b>	P08123
<b>Alternative Names</b>	COL1A2; Collagen alpha-2(I) chain; Alpha-2 type I collagen
<b>Background</b>	This gene encodes the pro-alpha2 chain of type I collagen whose triple helix comprises two alpha1 chains and one alpha2 chain. Type I is a fibril-forming collagen found in most connective

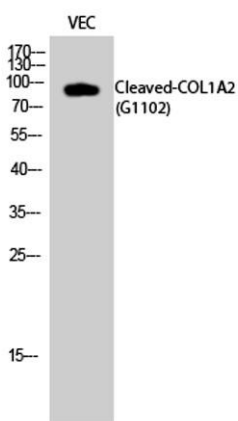




tissues and is abundant in bone, cornea, dermis and tendon. Mutations in this gene are associated with osteogenesis imperfecta types I-IV, Ehlers-Danlos syndrome type VIIB, recessive Ehlers-Danlos syndrome Classical type, idiopathic osteoporosis, and atypical Marfan syndrome. Symptoms associated with mutations in this gene, however, tend to be less severe than mutations in the gene for the alpha1 chain of type I collagen (COL1A1) reflecting the different role of alpha2 chains in matrix integrity. Three transcripts, resulting from the use of alternate polyadenylation signals, have been identified for this gene. [provided by R. Dalgleish, Feb 2008],

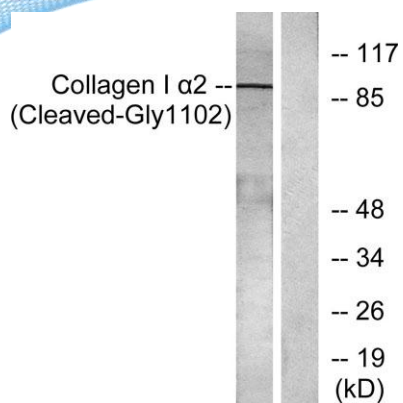


Western Blot analysis of various cells using Cleaved-COL1A2 (G1102) Polyclonal Antibody diluted at 1:1000



Western Blot analysis of VEC cells using Cleaved-COL1A2 (G1102) Polyclonal Antibody diluted at 1:1000





Western blot analysis of lysates from Jurkat cells, treated with etoposide 25uM 24h, using Collagen I alpha2 (Cleaved-Gly1102) Antibody. The lane on the right is blocked with the synthesized peptide.

