



Cleaved-COL3A1 (G1221) rabbit pAb

Cat No.:ES1035

For research use only

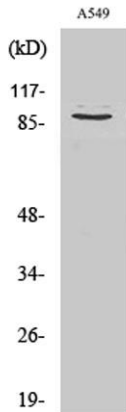
Overview

Product Name	Cleaved-COL3A1 (G1221) rabbit pAb
Host species	Rabbit
Applications	ELISA
Species Cross-Reactivity	Human;Rat;Mouse;
Recommended dilutions	ELISA: 1/10000. Not yet tested in other applications.
Immunogen	The antiserum was produced against synthesized peptide derived from human Collagen III alpha1. AA range:1172-1221
Specificity	Cleaved-COL3A1 (G1221) Polyclonal Antibody detects endogenous levels of fragment of activated COL3A1 protein resulting from cleavage adjacent to G1221.
Formulation	Liquid in PBS containing 50% glycerol, 0.5% BSA and 0.02% sodium azide.
Storage	Store at -20°C. Avoid repeated freeze-thaw cycles.
Protein Name	Collagen alpha-1(III) chain
Gene Name	COL3A1
Cellular localization	Secreted, extracellular space, extracellular matrix .
Purification	The antibody was affinity-purified from rabbit antiserum by affinity-chromatography using epitope-specific immunogen.
Clonality	Polyclonal
Concentration	1 mg/ml
Observed band	95kD
Human Gene ID	1281
Human Swiss-Prot Number	P02461
Alternative Names	COL3A1; Collagen alpha-1(III) chain
Background	collagen type III alpha 1 chain(COL3A1) Homo sapiens This gene encodes the pro-alpha1 chains of type III collagen, a fibrillar collagen that is found in extensible connective tissues such as skin, lung, uterus, intestine and the vascular system, frequently in association with type I collagen.

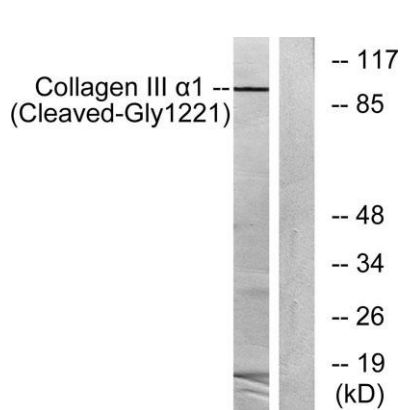




Mutations in this gene are associated with Ehlers-Danlos syndrome types IV, and with aortic and arterial aneurysms. Two transcripts, resulting from the use of alternate polyadenylation signals, have been identified for this gene. [provided by R. Dalgleish, Feb 2008],



Western Blot analysis of various cells using Cleaved-COL3A1 (G1221) Polyclonal Antibody



Western blot analysis of lysates from A549 cells, treated with etoposide 25uM 24h, using Collagen III alpha1 (Cleaved-Gly1221) Antibody. The lane on the right is blocked with the synthesized peptide.

