



Cleaved-KLK8 (V33) rabbit pAb

Cat No.:ES1040

For research use only

Overview

Product Name	Cleaved-KLK8 (V33) rabbit pAb
Host species	Rabbit
Applications	WB;ELISA
Species Cross-Reactivity	Human;Rat;Mouse;
Recommended dilutions	Western Blot: 1/500 - 1/2000. ELISA: 1/10000. Not yet tested in other applications.
Immunogen	The antiserum was produced against synthesized peptide derived from human Neuropsin. AA range:14-63
Specificity	Cleaved-KLK8 (V33) Polyclonal Antibody detects endogenous levels of fragment of activated KLK8 protein resulting from cleavage adjacent to V33.
Formulation	Liquid in PBS containing 50% glycerol, 0.5% BSA and 0.02% sodium azide.
Storage	Store at -20°C. Avoid repeated freeze-thaw cycles.
Protein Name	Kallikrein-8
Gene Name	KLK8
Cellular localization	Secreted . Cytoplasm . Shows a cytoplasmic distribution in the keratinocytes.
Purification	The antibody was affinity-purified from rabbit antiserum by affinity-chromatography using epitope-specific immunogen.
Clonality	Polyclonal
Concentration	1 mg/ml
Observed band	24kD
Human Gene ID	11202
Human Swiss-Prot Number	O60259
Alternative Names	KLK8; NRPN; PRSS19; TADG14; Kallikrein-8; hK8; Neuropsin; NP; Ovasin; Serine protease 19; Serine protease TADG-14; Tumor-associated differentially expressed gene 14 protein
Background	Kallikreins are a subgroup of serine proteases having diverse physiological functions. Growing evidence

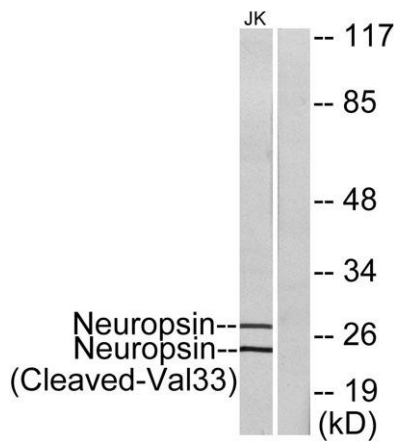




suggests that many kallikreins are implicated in carcinogenesis and some have potential as novel cancer and other disease biomarkers. This gene is one of the fifteen kallikrein subfamily members located in tandem in a gene cluster on chromosome 19. The encoded protein may be involved in proteolytic cascade in the skin and may serve as a biomarker for ovarian cancer. Alternate splicing of this gene results in multiple transcript variants encoding different isoforms. [provided by RefSeq, Jul 2013],



Western Blot analysis of various cells using Cleaved-KLK8 (V33) Polyclonal Antibody



Western blot analysis of lysates from Jurkat cells, treated with etoposide 25uM 24h, using Neuropsin (Cleaved-Val33) Antibody. The lane on the right is blocked with the synthesized peptide.

