



Cleaved-Factor VII LC (R212) rabbit pAb

Cat No.:ES1058

For research use only

Overview

Product Name	Cleaved-Factor VII LC (R212) rabbit pAb
Host species	Rabbit
Applications	WB;IHC;IF;ELISA
Species Cross-Reactivity	Human;Rat;Mouse;
Recommended dilutions	Western Blot: 1/500 - 1/2000. Immunohistochemistry: 1/100 - 1/300. ELISA: 1/20000. Not yet tested in other applications.
Immunogen	The antiserum was produced against synthesized peptide derived from human FA7. AA range:171-220
Specificity	Cleaved-Factor VII LC (R212) Polyclonal Antibody detects endogenous levels of fragment of activated Factor VII LC protein resulting from cleavage adjacent to R212.
Formulation	Liquid in PBS containing 50% glycerol, 0.5% BSA and 0.02% sodium azide.
Storage	Store at -20°C. Avoid repeated freeze-thaw cycles.
Protein Name	Coagulation factor VII
Gene Name	F7
Cellular localization	Secreted.
Purification	The antibody was affinity-purified from rabbit antiserum by affinity-chromatography using epitope-specific immunogen.
Clonality	Polyclonal
Concentration	1 mg/ml
Observed band	17kD
Human Gene ID	2155
Human Swiss-Prot Number	P08709
Alternative Names	F7; Coagulation factor VII; Proconvertin; Serum prothrombin conversion accelerator; SPCA; Eptacog alfa
Background	This gene encodes coagulation factor VII which is a vitamin K-dependent factor essential for hemostasis. This factor circulates in the blood in a zymogen



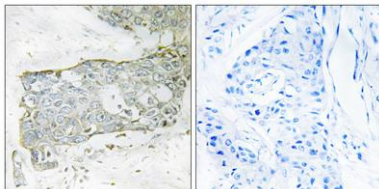


form, and is converted to an active form by either factor IXa, factor Xa, factor XIIIa, or thrombin by minor proteolysis. Upon activation of the factor VII, a heavy chain containing a catalytic domain and a light chain containing 2 EGF-like domains are generated, and two chains are held together by a disulfide bond. In the presence of factor III and calcium ions, the activated factor then further activates the coagulation cascade by converting factor IX to factor IXa and/or factor X to factor Xa. Defects in this gene can cause coagulopathy. Alternative splicing results in multiple transcript variants encoding different isoforms that may undergo similar proteolytic processing to generate mature polypeptides. [provided by RefSeq, Aug 2015],



Western Blot analysis of various cells using Cleaved-Factor VII LC (R212) Polyclonal Antibody

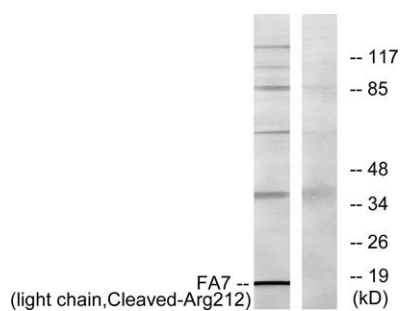
Immunohistochemistry analysis of paraffin-embedded human breast carcinoma tissue, using FA7 (light chain, Cleaved-Arg212) Antibody. The picture on the right is blocked with the synthesized peptide.





ELK Biotechnology

Western blot analysis of lysates from Jurkat cells, treated with eto 25uM 24h, using FA7 (light chain,Cleaved-Arg212) Antibody. The lane on the right is blocked with the synthesized peptide.



+86-27-59760950

ELKbio@ELKbiotech.com

www.elkbiotech.com

23-2, No.388 Gaoxin 2nd Road,Wuhan East Lake Hi-tech Development Zone, Hubei , P.R.C