



# Cleaved-Integrin $\alpha 6$ LC (E942) rabbit pAb

Cat No.:ES1063

For research use only

## Overview

<b>Product Name</b>	Cleaved-Integrin $\alpha 6$ LC (E942) rabbit pAb
<b>Host species</b>	Rabbit
<b>Applications</b>	WB;ELISA
<b>Species Cross-Reactivity</b>	Human;Rat;Mouse;
<b>Recommended dilutions</b>	Western Blot: 1/500 - 1/2000. ELISA: 1/10000. Not yet tested in other applications.
<b>Immunogen</b>	The antiserum was produced against synthesized peptide derived from human ITGA6. AA range:923-972
<b>Specificity</b>	Cleaved-Integrin $\alpha 6$ LC (E942) Polyclonal Antibody detects endogenous levels of fragment of activated Integrin $\alpha 6$ LC protein resulting from cleavage adjacent to E942.
<b>Formulation</b>	Liquid in PBS containing 50% glycerol, 0.5% BSA and 0.02% sodium azide.
<b>Storage</b>	Store at $-20^{\circ}\text{C}$ . Avoid repeated freeze-thaw cycles.
<b>Protein Name</b>	Integrin alpha-6
<b>Gene Name</b>	ITGA6
<b>Cellular localization</b>	Cell membrane ; Single-pass type I membrane protein . Cell membrane ; Lipid-anchor .
<b>Purification</b>	The antibody was affinity-purified from rabbit antiserum by affinity-chromatography using epitope-specific immunogen.
<b>Clonality</b>	Polyclonal
<b>Concentration</b>	1 mg/ml
<b>Observed band</b>	28kD
<b>Human Gene ID</b>	3655
<b>Human Swiss-Prot Number</b>	P23229
<b>Alternative Names</b>	ITGA6; Integrin alpha-6; CD49 antigen-like family member F; VLA-6; CD antigen CD49f
<b>Background</b>	integrin subunit alpha 6(ITGA6) Homo sapiens The gene encodes a member of the integrin alpha chain family of proteins. Integrins are heterodimeric

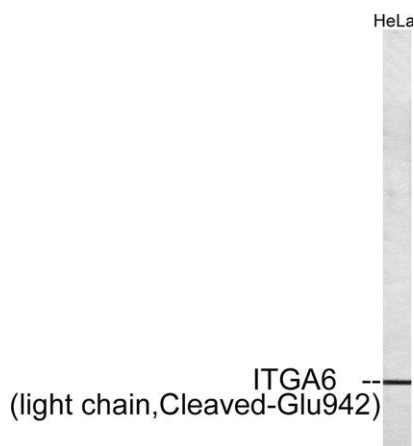




integral membrane proteins composed of an alpha chain and a beta chain that function in cell surface adhesion and signaling. The encoded preproprotein is proteolytically processed to generate light and heavy chains that comprise the alpha 6 subunit. This subunit may associate with a beta 1 or beta 4 subunit to form an integrin that interacts with extracellular matrix proteins including members of the laminin family. The alpha 6 beta 4 integrin may promote tumorigenesis, while the alpha 6 beta 1 integrin may negatively regulate erbB2/HER2 signaling. Alternative splicing results in multiple transcript variants. [provided by RefSeq, Oct 2015],



Western Blot analysis of various cells using Cleaved-Integrin  $\alpha 6$  LC (E942) Polyclonal Antibody



Western blot analysis of lysates from HeLa cells, treated with etoposide 25uM 24h, using ITGA6 (light chain, Cleaved-Glu942) Antibody. The lane on the right is blocked with the synthesized peptide.

