



Cleaved-Integrin α V HC (K889) rabbit pAb

Cat No.:ES1065

For research use only

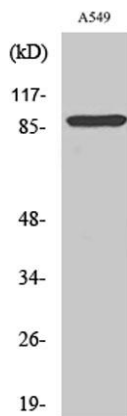
Overview

Product Name	Cleaved-Integrin α V HC (K889) rabbit pAb
Host species	Rabbit
Applications	WB;ELISA
Species Cross-Reactivity	Human;Rat;Mouse;
Recommended dilutions	Western Blot: 1/500 - 1/2000. ELISA: 1/10000. Not yet tested in other applications.
Immunogen	The antiserum was produced against synthesized peptide derived from human ITGAV. AA range:840-889
Specificity	Cleaved-Integrin α V HC (K889) Polyclonal Antibody detects endogenous levels of fragment of activated Integrin α V HC protein resulting from cleavage adjacent to K889.
Formulation	Liquid in PBS containing 50% glycerol, 0.5% BSA and 0.02% sodium azide.
Storage	Store at -20°C. Avoid repeated freeze-thaw cycles.
Protein Name	Integrin alpha-V
Gene Name	ITGAV
Cellular localization	Cell membrane; Single-pass type I membrane protein. Cell junction, focal adhesion .
Purification	The antibody was affinity-purified from rabbit antiserum by affinity-chromatography using epitope-specific immunogen.
Clonality	Polyclonal
Concentration	1 mg/ml
Observed band	95kD
Human Gene ID	3685
Human Swiss-Prot Number	P06756
Alternative Names	ITGAV; MSK8; VNRA; Integrin alpha-V; Vitronectin receptor subunit alpha; CD antigen CD51
Background	integrin subunit alpha V(ITGAV) Homo sapiens The product of this gene belongs to the integrin alpha chain family. Integrins are heterodimeric

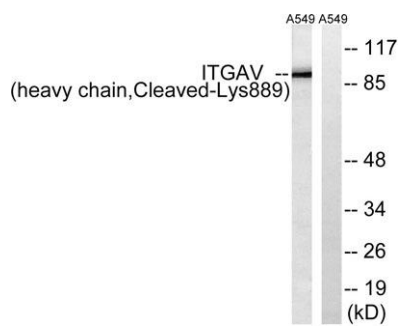




integral membrane proteins composed of an alpha subunit and a beta subunit that function in cell surface adhesion and signaling. The encoded preproprotein is proteolytically processed to generate light and heavy chains that comprise the alpha V subunit. This subunit associates with beta 1, beta 3, beta 5, beta 6 and beta 8 subunits. The heterodimer consisting of alpha V and beta 3 subunits is also known as the vitronectin receptor. This integrin may regulate angiogenesis and cancer progression. Alternative splicing results in multiple transcript variants. Note that the integrin alpha 5 and integrin alpha V subunits are encoded by distinct genes. [provided by RefSeq, Oct 2015],



Western Blot analysis of various cells using Cleaved-Integrin α V HC (K889) Polyclonal Antibody



Western blot analysis of lysates from A549 cells, treated with etoposide 25uM 1h, using ITGAV (heavy chain, Cleaved-Lys889) Antibody. The lane on the right is blocked with the synthesized peptide.

