



NFκB-p65 (Mono Methyl Lys314/Lys315) rabbit pAb

Cat No.:ES1084

For research use only

Overview

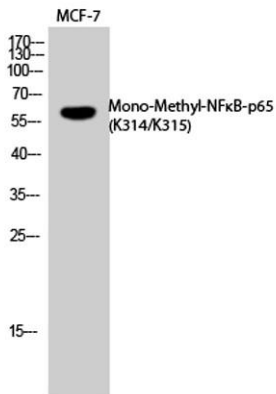
Product Name	NFκB-p65 (Mono Methyl Lys314/Lys315) rabbit pAb
Host species	Rabbit
Applications	WB;ELISA
Species Cross-Reactivity	Human;Mouse;Rat
Recommended dilutions	Western Blot: 1/500 - 1/2000. ELISA: 1/20000. Not yet tested in other applications.
Immunogen	Synthesized peptide derived from human p65 around the mono-methylation site of K314/K315.
Specificity	Mono-Methyl-NFκB-p65 (K314/K315) Polyclonal Antibody detects endogenous levels of p65 protein only when mono-methylated at K314/K315.
Formulation	Liquid in PBS containing 50% glycerol, 0.5% BSA and 0.02% sodium azide.
Storage	Store at -20°C. Avoid repeated freeze-thaw cycles.
Protein Name	Transcription factor p65
Gene Name	RELA
Cellular localization	Nucleus . Cytoplasm . Nuclear, but also found in the cytoplasm in an inactive form complexed to an inhibitor (I-kappa-B) (PubMed:1493333). Colocalized with DDX1 in the nucleus upon TNF-alpha induction (PubMed:19058135). Colocalizes with GFI1 in the nucleus
Purification	The antibody was affinity-purified from rabbit antiserum by affinity-chromatography using epitope-specific immunogen.
Clonality	Polyclonal
Concentration	1 mg/ml
Observed band	60kD
Human Gene ID	5970
Human Swiss-Prot Number	Q04206
Alternative Names	RELA; NFKB3; Transcription factor p65; Nuclear factor NF-kappa-B p65 subunit;Nuclear factor of





Background

kappa light polypeptide gene enhancer in B-cells 3
NF-kappa-B is a ubiquitous transcription factor involved in several biological processes. It is held in the cytoplasm in an inactive state by specific inhibitors. Upon degradation of the inhibitor, NF-kappa-B moves to the nucleus and activates transcription of specific genes. NF-kappa-B is composed of NFKB1 or NFKB2 bound to either REL, RELA, or RELB. The most abundant form of NF-kappa-B is NFKB1 complexed with the product of this gene, RELA. Four transcript variants encoding different isoforms have been found for this gene. [provided by RefSeq, Sep 2011],



Western Blot analysis of MCF7 cells using
Mono-Methyl-NFκB-p65 (K314/K315) Polyclonal Antibody.
Secondary antibody(catalog#:RS0002) was diluted at
1:20000

