



EF-1 α 1/2 (Acetyl Lys41) rabbit pAb

Cat No.:ES1103

For research use only

Overview

Product Name	EF-1 α 1/2 (Acetyl Lys41) rabbit pAb
Host species	Rabbit
Applications	WB;ELISA
Species Cross-Reactivity	Human;Mouse;Rat
Recommended dilutions	Western Blot: 1/500 - 1/2000. ELISA: 1/20000. Not yet tested in other applications.
Immunogen	The antiserum was produced against synthesized Acetyl-peptide derived from human EEF1A around the Acetylation site of Lys41. AA range:1-50
Specificity	Acetyl-EF-1 α 1/2 (K41) Polyclonal Antibody detects endogenous levels of EF-1 α 1/2 protein only when acetylated at K41.
Formulation	Liquid in PBS containing 50% glycerol, 0.5% BSA and 0.02% sodium azide.
Storage	Store at -20°C. Avoid repeated freeze-thaw cycles.
Protein Name	Elongation factor 1-alpha 1/Elongation factor 1-alpha 2/Putative elongation factor 1-alpha-like 3
Gene Name	EEF1A1/EEF1A2/EEF1A1P5
Cellular localization	Cytoplasm . Nucleus . Nucleus, nucleolus . Cell membrane . Colocalizes with DLC1 at actin-rich regions in the cell periphery (PubMed:19158340). Translocates together with ZPR1 from the cytoplasm to the nucleus and nucleolus after treatment with mitogens (
Purification	The antibody was affinity-purified from rabbit antiserum by affinity-chromatography using epitope-specific immunogen.
Clonality	Polyclonal
Concentration	1 mg/ml
Observed band	50kD
Human Gene ID	1915
Human Swiss-Prot Number	P68104
Alternative Names	EEF1A1; EEF1A; EF1A; LENG7; Elongation factor

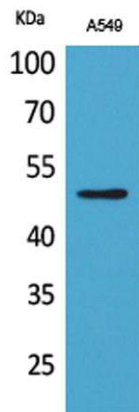




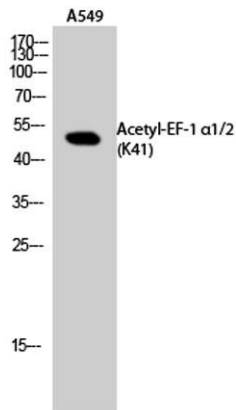
Background

1-alpha 1; EF-1-alpha-1; Elongation factor Tu; EF-Tu; Eukaryotic elongation factor 1 A-1; eEF1A-1; Leukocyte receptor cluster member 7; EEF1A2; EEF1AL; STN; Elongation factor 1-alpha 2; EF-1-alpha-2; Eukaryotic

This gene encodes an isoform of the alpha subunit of the elongation factor-1 complex, which is responsible for the enzymatic delivery of aminoacyl tRNAs to the ribosome. This isoform (alpha 1) is expressed in brain, placenta, lung, liver, kidney, and pancreas, and the other isoform (alpha 2) is expressed in brain, heart and skeletal muscle. This isoform is identified as an autoantigen in 66% of patients with Felty syndrome. This gene has been found to have multiple copies on many chromosomes, some of which, if not all, represent different pseudogenes. [provided by RefSeq, Jul 2008],



Western Blot analysis of A549 cells using Acetyl-EF-1 α 1/2 (K41) Polyclonal Antibody. Secondary antibody(catalog#:RS0002) was diluted at 1:20000

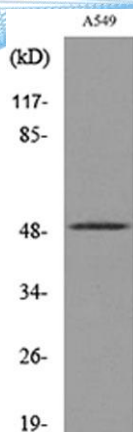


Western Blot analysis of A549 cells using Acetyl-EF-1 α 1/2 (K41) Polyclonal Antibody. Secondary antibody(catalog#:RS0002) was diluted at 1:20000





ELK Biotechnology



Western blot analysis of lysate from A549 cells, using
EEF1A-pan (Acetyl-Lys41) Antibody.



+86-27-59760950

ELKbio@ELKbiotech.com

www.elkbiotech.com

23-2, No.388 Gaoxin 2nd Road, Wuhan East Lake Hi-tech Development Zone, Hubei, P.R.C