



AP-1 (phospho Thr239) rabbit pAb

Cat No.:ES1262

For research use only

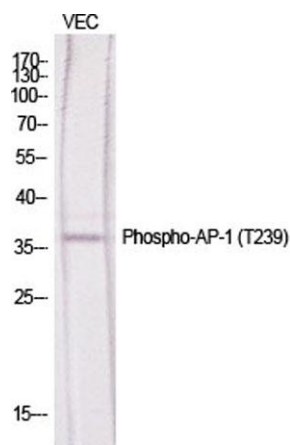
Overview

Product Name	AP-1 (phospho Thr239) rabbit pAb
Host species	Rabbit
Applications	WB;IHC;IF;IP;ELISA
Species Cross-Reactivity	Human;Mouse;Rat
Recommended dilutions	Western Blot: 1/500 - 1/2000. Immunohistochemistry: 1/100 - 1/300. Immunoprecipitation: 2-5 ug/mg lysate. ELISA: 1/20000. Not yet tested in other applications.
Immunogen	The antiserum was produced against synthesized peptide derived from human c-Jun around the phosphorylation site of Thr239. AA range:206-255
Specificity	Phospho-AP-1 (T239) Polyclonal Antibody detects endogenous levels of AP-1 protein only when phosphorylated at T239.
Formulation	Liquid in PBS containing 50% glycerol, 0.5% BSA and 0.02% sodium azide.
Storage	Store at -20°C. Avoid repeated freeze-thaw cycles.
Protein Name	Transcription factor AP-1;jun;c-jun; AP-1
Gene Name	JUN
Cellular localization	Nucleus.
Purification	The antibody was affinity-purified from rabbit antiserum by affinity-chromatography using epitope-specific immunogen.
Clonality	Polyclonal
Concentration	1 mg/ml
Observed band	39-42kD
Human Gene ID	3725
Human Swiss-Prot Number	P05412
Alternative Names	JUN; Transcription factor AP-1; Activator protein 1; AP1; Proto-oncogene c-Jun; V-jun avian sarcoma virus 17 oncogene homolog; p39
Background	This gene is the putative transforming gene of avian sarcoma virus 17. It encodes a protein which is

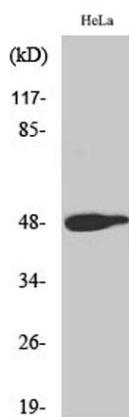




highly similar to the viral protein, and which interacts directly with specific target DNA sequences to regulate gene expression. This gene is intronless and is mapped to 1p32-p31, a chromosomal region involved in both translocations and deletions in human malignancies. [provided by RefSeq, Jul 2008],

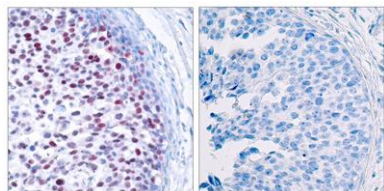


Western Blot analysis of various cells using Phospho-AP-1 (T239) Polyclonal Antibody diluted at 1:500



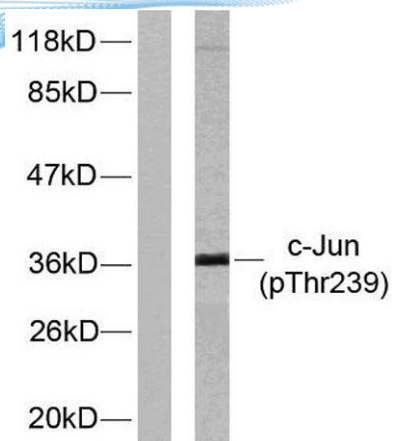
Western Blot analysis of HeLa cells using Phospho-AP-1 (T239) Polyclonal Antibody diluted at 1:500

Immunohistochemistry analysis of paraffin-embedded human breast carcinoma, using c-Jun (Phospho-Thr239) Antibody. The picture on the right is blocked with the phospho peptide.





ELK Biotechnology



Western blot analysis of lysates from HeLa cells treated with UV, using c-Jun (Phospho-Thr239) Antibody. The lane on the left is blocked with the phospho peptide.



+86-27-59760950

ELKbio@ELKbiotech.com

www.elkbiotech.com

23-2, No.388 Gaoxin 2nd Road,Wuhan East Lake Hi-tech Development Zone, Hubei , P.R.C