



# Recombinant Human CORO6 (N-6His)

<b>Catalog #</b>	EPT126
<b>Expression Host</b>	E.coli
<b>DESCRIPTION</b>	Recombinant Human Coronin-6 is produced by our E.coli expression system and the target gene encoding Met1-Asp237 is expressed with a 6His tag at the N-terminus.
<b>Accession</b>	Q6QEF8-4
<b>Synonyms</b>	Coronin-6; Clipin-E; CORO6
<b>Mol Mass</b>	28.3 KDa
<b>AP Mol Mass</b>	30-35 KDa, reducing conditions
<b>Purity</b>	Greater than 95% as determined by reducing SDS-PAGE.
<b>Endotoxin</b>	Less than 0.1 ng/μg (1 EU/μg) as determined by LAL test.
<b>FORMULATION</b>	Lyophilized from a 0.2 μm filtered solution of 20mM PB, 150m M NaCl, 1mM DTT, pH 7.4.
<b>RECONSTITUTION</b>	Always centrifuge tubes before opening. Do not mix by vortex or pipetting.





It is not recommended to reconstitute to a concentration less than 100µg/ml.

Dissolve the lyophilized protein in distilled water.

Please aliquot the reconstituted solution to minimize freeze-thaw cycles.

## SHIPPING

The product is shipped at ambient temperature.

Upon receipt, store it immediately at the temperature listed below.

## STORAGE

Lyophilized protein should be stored at  $< -20^{\circ}\text{C}$ , though stable at room temperature for 3 weeks.

Reconstituted protein solution can be stored at  $4-7^{\circ}\text{C}$  for 2-7 days.

Aliquots of reconstituted samples are stable at  $< -20^{\circ}\text{C}$  for 3 months.

## BACKGROUND

Coronin 6, a newly identified member of the coronin family, is highly enriched at adult NMJs and regulates AChR clustering via modulating the interaction between receptors and the actin cytoskeletal network. Coronins are a family of conserved actin-binding proteins originally identified in the actin-rich structure of the amoeba *Dictyostelium discoideum*. To date, seven members of coronins have been identified in





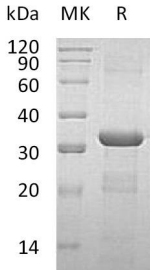
mammals, and most exhibit tissue-specific distribution patterns. Coronin 6 is prominently expressed in adult muscle and enriched at the NMJ. Studies with cultured myotubes reveal that Coronin 6 regulates both agrin- and laminin-induced AChR clustering and is important for anchoring AChRs onto the actin cytoskeleton. Also, both the C-terminal region and a conserved Arg29 residue at the N terminus of Coronin 6 are essential for its actin-binding activity and stabilization of AChR–cytoskeleton linkage. Importantly, in vivo knockdown of Coronin 6 in mouse skeletal muscle fibers leads to destabilization of AChR clusters, which demonstrates that Coronin 6 is a critical regulator of AChR clustering at the postsynaptic region of the NMJs through modulating the receptor-anchored actin cytoskeleton. The human Coronin 6 has five isoforms produced by alternative splicing, and tissue-specific expression of these isoforms are unclear.





**ELK Biotechnology**

# SDS-PAGE



+86-27-59760950

ELKbio@ELKbiotech.com

www.elkbiotech.com

23-2, No.388 Gaoxin 2nd Road, Wuhan East Lake Hi-tech Development Zone, Hubei, P.R.C