



# Recombinant Human CCL5

<b>Catalog #</b>	EPT210
<b>Expression Host</b>	E.coli
<b>DESCRIPTION</b>	Recombinant Human C-C Motif Chemokine 5 is produced by our E.coli expression system and the target gene encoding Ser24-Ser91 is expressed.
<b>Accession</b>	P13501
<b>Synonyms</b>	C-C Motif Chemokine 5; EoCP; Eosinophil Chemotactic Cytokine; SIS-Delta; Small-Inducible Cytokine A5; T Cell-Specific Protein P228; TCP228; T-Cell-Specific Protein RANTES; CCL5; D17S136E; SCYA5
<b>Mol Mass</b>	7.8 KDa
<b>AP Mol Mass</b>	9-12 KDa, reducing conditions
<b>Purity</b>	Greater than 95% as determined by reducing SDS-PAGE.
<b>Endotoxin</b>	Less than 0.1 ng/μg (1 EU/μg) as determined by LAL test.
<b>FORMULATION</b>	Lyophilized from a 0.2 μm filtered solution of 20mM PB, 150mM NaCl, pH 7.4.





## RECONSTITUTION

Always centrifuge tubes before opening. Do not mix by vortex or pipetting.

It is not recommended to reconstitute to a concentration less than 100 $\mu$ g/ml.

Dissolve the lyophilized protein in distilled water.

Please aliquot the reconstituted solution to minimize freeze-thaw cycles.

## SHIPPING

The product is shipped at ambient temperature.

Upon receipt, store it immediately at the temperature listed below.

## STORAGE

Lyophilized protein should be stored at  $< -20^{\circ}\text{C}$ , though stable at room temperature for 3 weeks.

Reconstituted protein solution can be stored at  $4-7^{\circ}\text{C}$  for 2-7 days.

Aliquots of reconstituted samples are stable at  $< -20^{\circ}\text{C}$  for 3 months.

## BACKGROUND

Human Chemokine (C-C Motif) Ligand 5 (CCL5) plays an active role in recruiting leukocytes into inflammatory sites. CCL5 is secreted by many cell types at inflammatory sites and it exerts a wide range of activities through the receptors CCR1, CCR3, CCR4, and CCR5. N-Terminal truncated CCL5/RANTES,

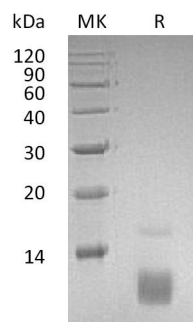




**ELK Biotechnology**

Met-RANTES, and amino-oxypentane (AOP)-RANTES exhibit antagonist or partial agonist functions on their receptors. CCL5/RANTES attracts different subtypes of leukocytes into inflamed tissue and intervenes in a wide range of allergic and autoimmune diseases.

## **SDS-PAGE**



+86-27-59760950

[ELKbio@ELKbiotech.com](mailto:ELKbio@ELKbiotech.com)

[www.elkbiotech.com](http://www.elkbiotech.com)

23-2, No.388 Gaoxin 2nd Road, Wuhan East Lake Hi-tech Development Zone, Hubei, P.R.C