



# Recombinant Mouse PLXDC2 (C-6His)

<b>Catalog #</b>	EPT215
<b>Expression Host</b>	Human Cells
<b>DESCRIPTION</b>	Recombinant Mouse Plexin Domain-containing Protein 2 is produced by our Mammalian expression system and the target gene encoding Glu31-Ala455 is expressed with a 6His tag at the C-terminus.
<b>Accession</b>	AAH57881.1
<b>Synonyms</b>	Plexin domain-containing protein 2;Tumor endothelial marker 7-related protein;Plxdc2;Tem7r
<b>Mol Mass</b>	48.95 KDa
<b>AP Mol Mass</b>	70-90 KDa, reducing conditions
<b>Purity</b>	Greater than 95% as determined by reducing SDS-PAGE.
<b>Endotoxin</b>	Less than 0.1 ng/μg (1 EU/μg) as determined by LAL test.
<b>FORMULATION</b>	Lyophilized from a 0.2 μm filtered solution of PBS, pH 7.4.
<b>RECONSTITUTION</b>	Always centrifuge tubes before opening.Do not mix by





vortex or pipetting.

It is not recommended to reconstitute to a concentration less than 100µg/ml.

Dissolve the lyophilized protein in distilled water.

Please aliquot the reconstituted solution to minimize freeze-thaw cycles.

## SHIPPING

The product is shipped at ambient temperature.

Upon receipt, store it immediately at the temperature listed below.

## STORAGE

Lyophilized protein should be stored at  $< -20^{\circ}\text{C}$ , though stable at room temperature for 3 weeks.

Reconstituted protein solution can be stored at  $4-7^{\circ}\text{C}$  for 2-7 days.

Aliquots of reconstituted samples are stable at  $< -20^{\circ}\text{C}$  for 3 months.

## BACKGROUND

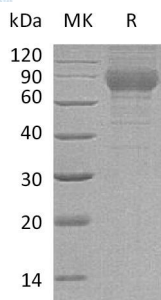
Mouse Plexin domain-containing protein 2(PLXDC2) is a single-pass type I membrane protein. The protein is expressed in tumor endothelium and in vessels of some normal tissues, such as the muscle and lung. PLXDC2 can interact with CTTN, and may play a role in tumor angiogenesis.





**ELK Biotechnology**

## SDS-PAGE



+86-27-59760950

ELKbio@ELKbiotech.com

[www.elkbiotech.com](http://www.elkbiotech.com)

23-2, No.388 Gaoxin 2nd Road, Wuhan East Lake Hi-tech Development Zone, Hubei, P.R.C