



# Recombinant E.coli Trp synthase (N-6His)

<b>Catalog #</b>	EPT234
<b>Expression Host</b>	E.coli
<b>DESCRIPTION</b>	Recombinant E.coli Tryptophan Synthase is produced by our E.coli expression system and the target gene encoding Met1-Ser268&Thr2-Ile397 is expressed with a 6His tag at the N-terminus.
<b>Accession</b>	P0A877&P0A879
<b>Synonyms</b>	Tryptophan synthetase; Tryptophan synthase
<b>Mol Mass</b>	28.7&43.8 KDa
<b>AP Mol Mass</b>	28&40-50 KDa, reducing conditions
<b>Purity</b>	Greater than 95% as determined by reducing SDS-PAGE.
<b>Endotoxin</b>	Less than 0.1 ng/μg (1 EU/μg) as determined by LAL test.
<b>FORMULATION</b>	Supplied as a 0.2 μm filtered solution of PBS, pH 7.4.
<b>RECONSTITUTION</b>	
<b>SHIPPING</b>	The product is shipped on dry ice/polar packs.





Upon receipt, store it immediately at the temperature listed below.

## STORAGE

Store at  $\leq -70^{\circ}\text{C}$ , stable for 6 months after receipt.

Store at  $\leq -70^{\circ}\text{C}$ , stable for 3 months under sterile conditions after opening.

Please minimize freeze-thaw cycles.

## BACKGROUND

Tryptophan synthase is a multienzyme  $\alpha_2\beta_2$  complex composed of two protein subunit. Tryptophan synthase catalyzes the last two steps in the synthesis of L-tryptophan (L-Trp). The  $\alpha$ -subunit catalyzes cleavage of 3-indole-d-glycerol 3'-phosphate (IGP) to give indole and D-glyceraldehyde 3'-phosphate (G3P). Indole is then transferred through a 25-Å hydrophobic tunnel to the  $\beta$ -subunit. The  $\beta_2$  subunit contains pyridoxal 5'-phosphate and catalyzes several pyridoxal 5'-phosphate-dependent reactions, including/3-elimination reactions 6 and a thiol-dependent transamination reaction. This enzyme is commonly found in Eubacteria, Archaeobacteria, Protista, Fungi, and Plantae, but is absent from Animalia. As humans do not have tryptophan synthase, this enzyme has been explored as a potential

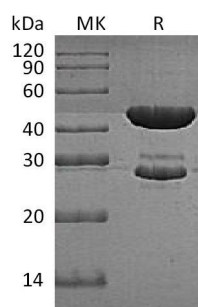




**ELK Biotechnology**

drug target.

## SDS-PAGE



+86-27-59760950

ELKbio@ELKbiotech.com

www.elkbiotech.com

23-2, No.388 Gaoxin 2nd Road, Wuhan East Lake Hi-tech Development Zone, Hubei, P.R.C